

# WE HAVE REVOLUTIONIZED AIR DELIVERY

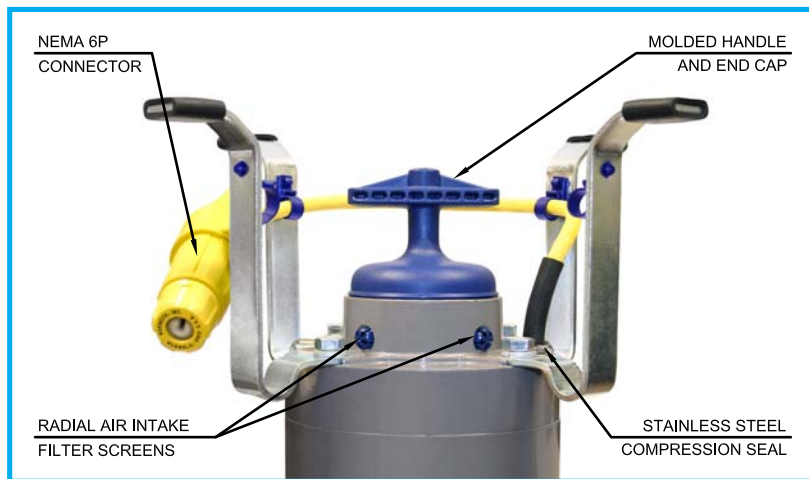
## THE SINGULAIR MODEL 206C AERATOR FLOODPROOF CONSTRUCTION DEPENDABLE PERFORMANCE EASILY MAINTAINED

The Model 206C Singulair aerator delivers performance worth talking about. Built with improved watertight integrity, state-of-the-art ball bearings, radial air intake openings and waterproof electrical connections, this Singulair air delivery system outperforms and outlasts all others.

## TECHNOLOGY YOU CAN COUNT ON ENGINEERED FOR EXTENDED LIFE

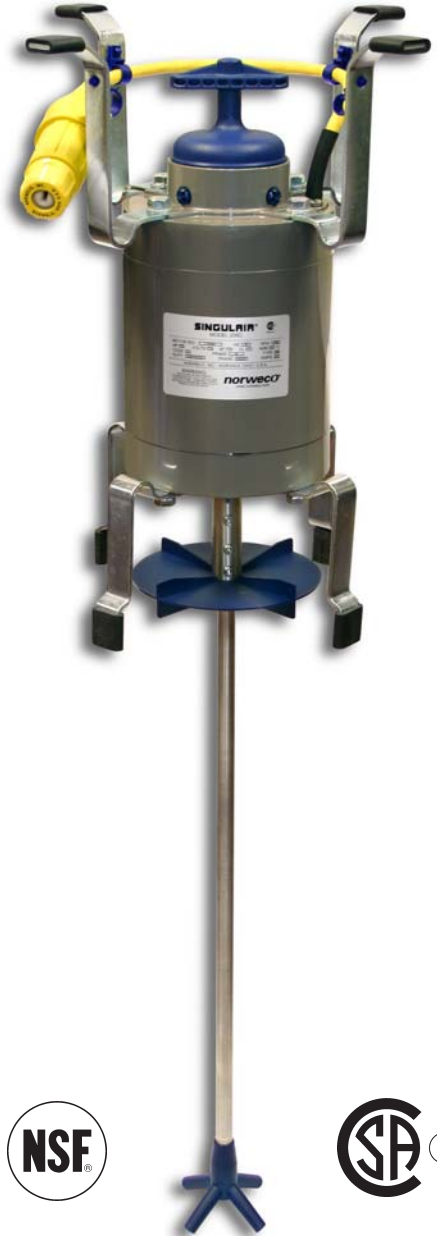
Combining advanced electro-mechanical components with energy efficiency, the Model 206C aerator masters the competition. Designed specifically for use in the rigorous environment of an aeration chamber, this aerator runs cooler, cleaner, quieter and longer than any other air delivery system on the market today.

## THE PERFORMANCE YOU NEED THE QUALITY YOU CAN TRUST



## SINGULAIR MODEL 206C AERATOR FEATURES

- Lowest electrical usage in the industry
- Technologically advanced ball bearings
- NEMA 6P electrical connector
- Floodproof design
- Proprietary bearing protection system
- Radial air intake openings
- Quieter, cleaner operation
- Certified to UL standard
- Made in the U.S.A.



**norweco**<sup>®</sup>

*Engineering the future of water  
and wastewater treatment*

220 REPUBLIC STREET  
NORWALK, OHIO, USA 44857-1156  
TELEPHONE (419) 668-4471  
FAX (419) 663-5440  
[www.norweco.com](http://www.norweco.com)